

Combination Non-Refrigerated Service Above Refrigerated Self-Service Case

□ COU2757R

Lengths include end panels
27-1/2"L x 34-3/4"D x 57-7/8"H



MODEL SHOWN: COU2757R

FOR GENERAL REFERENCE ONLY

Models shown may not match the model features or manuf year of the item offered by AERE.

STANDARD FEATURES

- Breeze™ w/EnergyWise s/c refrigeration
- Angled deck (n/a w/display steps)
- Casters
- Clear glass shelves, lighted (LED 3500K)
- Compressor air intake from rear and out front panel at toe kick.
Front panel cannot be blocked.
- Condensate pan (self-contained refrig. only)
- Curved single pane, fixed front glass
- Full end panel w/mirror interior
- Integrated average product temperature of 40°F or less
- LED 3500K top & shelf lights
- One year parts & labor; 5 year compressor warranty

Features	Standard	Options
EXTERIOR COLOR	□ Laminated (non-premium) Confirm pattern/grain direction	□ Laminated (premium) Confirm pattern/grain direction □ Stainless steel
INTERIOR COLOR	□ Black	□ Stainless steel
UPPER REAR	□ Clear glass rear sliding doors w/o lock	□ Reflective glass rear sliding doors w/o lock
ELECTRICAL CONNECT	□ 6' straight blade power cord (self-cont.)	□ 6' locking power cord (self-cont.)
MISCELLANEOUS		□ Rear door lock □ Second year parts & labor warranty (excludes compressor)
ACCESSORIES		□ 2"H Display steps □ Night curtain, retractable, non-locking □ Removable wire security cover, locking

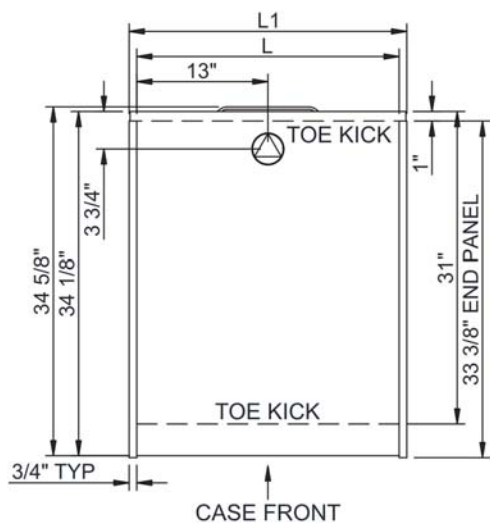
Oasis®

Product Specifications

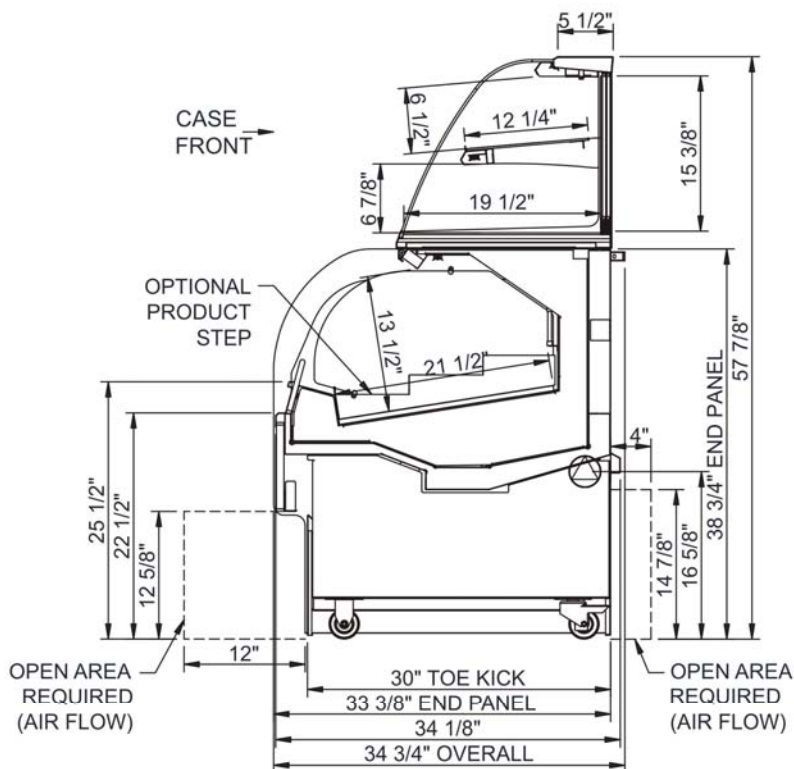
Intended Environment: Type I - Designed to operate in ambient conditions of 75°F with 55% relative humidity unless noted otherwise in system information below.

Zone	Intended Product To Be Displayed	Warmest Avg Prod Temp ° F
1	Packaged refrigerated products	X40
2	Packaged non-refrigerated products	XAmbient

PLAN VIEW



SIDE VIEW



NOTE: ALL DIMENSIONS APPROXIMATE

- ELECTRICAL JUNCTION BOX (SUPPLIED WITH 6" LEADS OR POWER CORD).
- REMOTE FLOOR SINK & UTILITIES ACCESS AREA.
- LOCATION OF DRAIN TUBE FOR REMOTE REF. ONLY (SUPPLIED WITH 3/4" OR 1 1/2" PVC TUBE).
- SELF-CONTAINED CASE SERVICE ACCESS AREA.
- REFRIGERATION LINE CONNECTION.
- DRY CASE SERVICE ACCESS AREA.

Model Technical Specifications

Model	L"	L1"	L2"	System Circuit Volts			Phs	Freq	Amps ***	Watts	Wires	NEMA Plug	SST	BTUH	Est Wt
COU2757R	N/A	27.50	.00	Self-Contained	Circuit #1	110-120	1	60	5.92	592	N/A	5-15P or L5-15P	N/A	N/A	800

*** Does not include electric defrost on freezer models.

Regulatory Approvals:

All Models	<p>Accordance with AHRI Std 1200</p> <p>ETL Listed to UL 471</p> <p>ETL Listed to CAN/CSA 22.2 No. 120</p> <p>ETL Sanitation to NSF 7</p>
------------	---



In Accordance with
AHRI Std 1200

DOE 2017
Energy Efficiency
Compliant

Important Notes:

- 1) ELECTRICAL NOTE: If GFCI is required, a GFCI breaker MUST be used in lieu of a GFCI receptacle
- 2) 35 1/2" Minimum door entry clearance required (Without shipping skid).
- 3) Compressor air ventilation is out the front panel. Front panel cannot be blocked. Product must be cooled before being displayed within the case.

⚠ WARNING: This product can expose you to chemicals, including Urethane (Ethyl Carbamate), which are known to the State of California to cause cancer and birth defects or other reproductive harm. For more information go to www.P65Warnings.ca.gov.